

HD480 NetClone Module

EEG HD480 at 100.200.100.105
[Terminal](#) [Clone](#) [Startup Settings](#) [iCap](#) [Manuals](#)

Network Clone Port Configuration

Clone Server	<input type="button" value="Stop"/>
Num. Clients	3
Tx Packets	186

Clone data from this encoder to another encoder.

Clone Client	<input type="button" value="Start"/>
Network Address	<input type="text" value="enter.IP.here"/>

Clone data to this encoder from the encoder at the specified address.

Figure 1 - NetClone Configuration

NetClone is an optional application for the HD480 that transmits all control commands and data that are received through the dial up modem, the iCap client or the physical serial port of the encoder. Using the NetClone Web interface, one encoder is configured to be the data server transmission device and multiple encoders can be configured to be clients that will receive the caption transmission from the data server. The server receives caption data from either the iCap connection, the P1 serial port or the Modem A port. If Modem A is active it will be used as the caption data source. If Modem A is not active then either iCap or the P1 port will be used as the data source. iCap and P1 must not be active simultaneously or the data will become corrupted. Caption data is transmitted to the client HD480(s) via the LAN.

Figure 1 shows the server configuration. Notice that Clone Client “Start” button is disabled since this encoder is the data server. Statistical

information regarding packet transmission is displayed beneath the Clone Server “Stop” button.

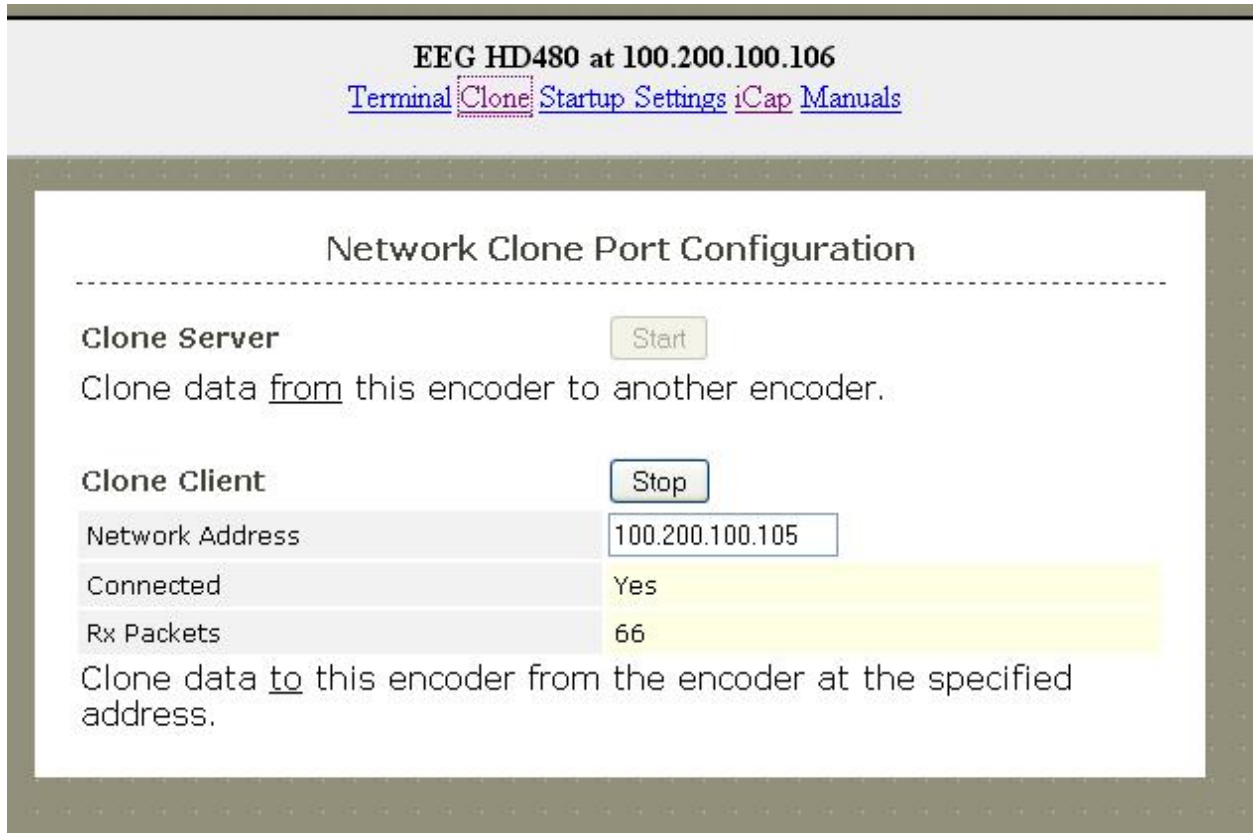


Figure 2 - NetClone Client Configuration

Figure 2 illustrates the NetClone Client Configuration. Notice that the Clone Server “Start” button has been disabled, that the IP Address of the Server has been entered and that statistical information regarding received packets is displayed within the Client configuration area.